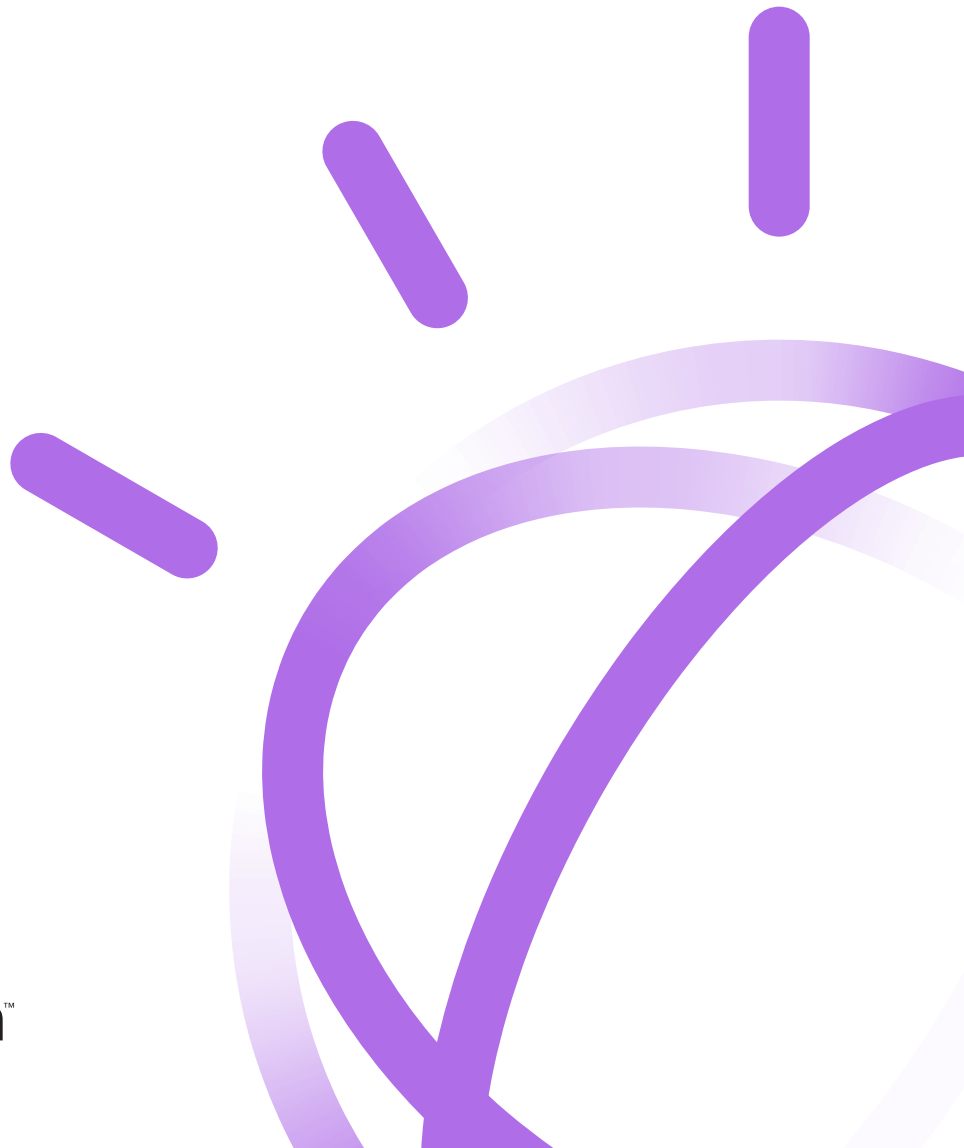




## Federal healthcare decision making

Advantage Suite comprehensive  
data to help you drive quality  
and control costs



---

## Highlights

- Quickly access and analyze program healthcare data
- Create routine and ad hoc reports
- Integrate different data formats

## Features

- A single interface
- Executive-level and detailed ad hoc analytic reporting
- Analytically ready database
- Robust, clinically based analytics including episodes of care, clinical data, severity adjustment methodologies, predictive modeling and practice guidelines
- Extensive catalog of templates and drag-and-drop report designs
- SURS and MARS certified
- Improved specialty drugs listings
- 250+ new measures, including measures for vaccines, disease management, treatment and diagnostic testing
- Enhanced clinical rules engine that applies National Quality Forum clinical quality published measures
- ICD-10-CM compliant and supports ICD-9 and ICD-10 codes in tandem
- Part of the Payment Integrity offering

Truven Health Analytics® was acquired by IBM in 2016 to help form a new business, Watson Health™. Watson Health aspires to improve lives and give hope by delivering innovation to address the world's most pressing health challenges through data and cognitive insights.

## Make informed healthcare decisions with Advantage Suite

In the wake of landmark healthcare reform legislation, Medicaid and other state healthcare programs are faced with a daunting set of challenges. They must contain spiraling costs, improve quality of care, and increase healthcare access to the most vulnerable populations.

Truven Health Advantage Suite® helps state healthcare agencies access and analyze their program's healthcare data to help them address these challenges and provide high quality care to beneficiaries.

Advantage Suite helps state healthcare agencies address the following challenges:

- Pressure to contain escalating costs
- Achieve compliance with state and federal regulations and reporting requirements
- Reduce proliferating fraud and abuse schemes
- Complex and time-intensive reporting for routine and ad hoc requests
- Identification of reasons for increases in cost and utilization
- Balancing the needs to contain costs, improve quality of care and expand access to care

## One of the leaders in healthcare decision support for the federal government

Truven Health Advantage Suite integrates information from diverse sources and systems, organizes it to help support decision making, and enables easy access to information in a flexible, customized application. Our system is a certified surveillance and utilization review subsystem (SURS) and management administrative reporting subsystem (MARS) solution in many states and provides the management tools and insight so you have the information necessary to improve the efficiency and performance of federal government healthcare programs.

## Solutions for federal government

Advantage Suite™ supports the business process areas critical to managing the healthcare enterprise

- Beneficiary Management
- Provider Management
- Program Management
- Operations Management
- Program Integrity Management
- Managed Care Management
- Care Management

## A single-source Medicaid solution

Advantage Suite supports core healthcare program disciplines through a single database and one set of analytic applications. Decision Support System (DSS), SURS and MARS information is updated at the same time, in one unified process. Advantage Suite is a powerful, and highly capable healthcare information solution – one that is ideally suited for healthcare reform initiatives, and can help you transform the effectiveness of your state healthcare agency. Its capabilities include the following:

- Financial reporting for budget development, cash flow analysis and rate-setting
- Management reporting that includes dashboard measures of program performance
- Medical policy that includes advanced clinical analysis and external benchmarks
- Managed care monitoring that fully integrates claims and encounter data
- Provider profiling that uses widely accepted methods for case-mix adjustment
- Recipient profiling, demographics, cost-sharing and population trend analysis
- Quality assurance and quality improvement
- Disease management evaluation and monitoring that includes predictive modeling
- Program integrity that includes SURS reporting

## Advantage Suite single interface



The same reporting tools and applications are available to every user in the agency, yet all users have capabilities suited to their task

## About Truven Health Analytics, part of the IBM Watson Health business

Truven Health Analytics®, part of the IBM Watson Health™ business, provides market-leading performance improvement solutions built on data integrity, advanced analytics and domain expertise. For more than 40 years, our insights and solutions have been providing hospitals and clinicians, employers and health plans, state and federal government agencies, life sciences companies and policymakers, the facts they need to make confident decisions that directly affect the health and well-being of people and organizations in the US and around the world. The company was acquired by IBM in 2016 to help form a new business, Watson Health. Watson Health aspires to improve lives and give hope by delivering innovation to address the world's most pressing health challenges through data and cognitive insights.

Truven Health Analytics owns some of the most trusted brands in healthcare, such as MarketScan®, 100 Top Hospitals®, Advantage Suite®, Micromedex®, Simpler® and ActionOI®. Truven Health has its principal offices in Ann Arbor, MI, Chicago, IL and Denver, CO.

For more information, please visit [truvenhealth.com](http://truvenhealth.com)

© Copyright 2017 Truven Health Analytics, part of the IBM Watson Health™ business

Truven Health Analytics, part of the IBM Watson Health™ business  
100 Phoenix Drive  
Ann Arbor, MI 48108

Produced in the United States of America  
August 2017

IBM, the IBM logo and [ibm.com](http://ibm.com) are trademarks of IBM Corporation in the United States, other countries or both. Truven Health Analytics and its respective logo are trademarks of Truven Health Analytics in the United States, other countries or both. All other company or product names are registered trademarks or trademarks of their respective companies. A current list of IBM trademarks is available on the Web at “Copyright and trademark information” at [www.ibm.com/legal/copytrade.shtml](http://www.ibm.com/legal/copytrade.shtml).

Java and all Java-based trademarks and logos are trademarks or registered trademarks of Oracle and/or its affiliates.

Microsoft, Windows, Windows NT, and the Windows logo are trademarks of Microsoft Corporation in the United States, other countries, or both.

This document is current as of the initial date of publication and may be changed by IBM at any time. Not all offerings are available in every country in which IBM operates.

The information in this document is provided “as is” without any warranty, express or implied, including without any warranties of merchantability, fitness for a particular purpose and any warranty or condition of non-infringement. IBM products are warranted according to the terms and conditions of the agreements under which they are provided.

The client is responsible for ensuring compliance with all applicable laws and regulations applicable to it. IBM does not provide legal advice or represent or warrant that its services or products will ensure that the client is in compliance with any law or regulation.

The performance data and client examples cited are presented for illustrative purposes only. Actual performance results may vary depending on the specific configurations and operating conditions. It is the user’s responsibility to evaluate and verify the operation of any other products or programs with IBM product and programs.

Statement of Good Security Practices: IT system security involves protecting systems and information through prevention, detection and response to improper access from within and outside your enterprise. Improper access can result in information being altered, destroyed, misappropriated or misused or can result in damage to or misuse of your systems, including for use in attacks on others. No IT system or product should be considered completely secure and no single product, service or security measure can be completely effective in preventing improper use or access. IBM systems, products and services are designed to be part of a lawful, comprehensive security approach, which will necessarily involve additional operational procedures, and may require other systems, products or services to be most effective. IBM does not warrant that any systems, product or services are immune from, or will make your enterprise immune from, the malicious or illegal conduct of any party.

As of the latest publication date, the healthcare information presented here is accurate.

HPS03057-USEN-00