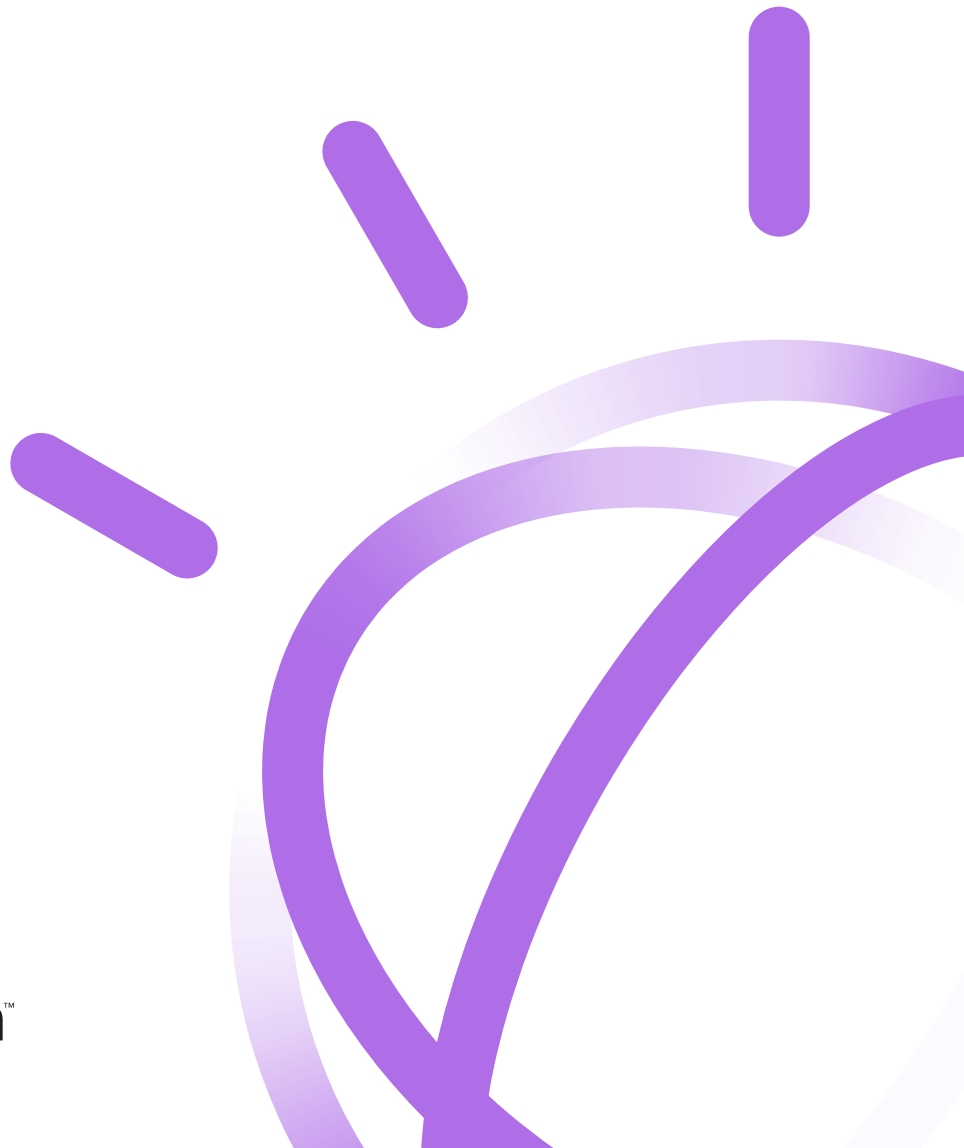




Analytic consulting and research services

Research, policy and analytic
expertise



Highlights

Our solution

The healthcare research and consulting services of Truven Health are designed to help you improve healthcare quality, access and efficiency.

Truven Health Analytics® was acquired by IBM in 2016 to help form a new business, Watson Health™. Watson Health aspires to improve lives and give hope by delivering innovation to address the world's most pressing health challenges through data and cognitive insights.

Insights to help you address real-world challenges

As your trusted partner, Truven Health Analytics®, part of the IBM Watson Health™ business, will provide insights to help you make informed strategic decisions. Our research staff have cross-industry expertise in evolving trends, including comparative effectiveness, quality and cost of care, health information technology advances, clinical decision support and prevention and wellness. Government and private organizations rely on our experts and databases to provide them with solutions designed to help them improve healthcare access, enhance quality and reduce costs.

Affecting change

Our innovative research and consulting services can provide assistance support to help you drive policy and operational changes in the following areas:

Research data development

Develop and integrate large-scale healthcare databases and other tools to support research and analysis.

Provider quality and efficiency measurement

Assess provider and health plan performance with expertise in value-driven initiatives, healthcare cost and quality measurement and multi-stakeholder data sharing initiatives.

Health and productivity research

Conduct empirical research that is focused on the relationship between employee wellness, healthcare utilization and cost and work-related productivity.

Comparative effectiveness research

Assess treatment outcomes in defined patient populations using evidence-based research.

Outcomes research

Evaluate the clinical and economic outcomes of disease states, pharmaceutical treatments and other interventions.

Community living systems

Facilitate implementation of long-term services and support systems that measure and improve quality, integrate medical and social supports, protect consumer health and use the most cost-efficient purchasing models for your enterprise.

Behavioral health and quality research

Analyze policies in two high-priority areas—the financing of mental health and substance abuse treatment services and the quality of all types of healthcare.

Patient-centered medical home

Design and implement patient-centered medical home models and evaluate their effectiveness in improving the quality and efficiency of patient care.

Sample project experience

We serve both payer and provider markets, applying cross-industry expertise to develop meaningful solutions for our customers. A sampling of recent work follows.

For more information about a particular project, please visit the website listed for each project or email us at research@truvenhealth.com.

Healthcare Cost and Utilization Project (HCUP)

We are developing a series of healthcare databases and related software tools for the Agency for Healthcare Research and Quality (AHRQ) to enable research on a broad range of health policy issues at the national, state, and local market levels. <http://www.hcup-us.ahrq.gov/home.jsp>

State snapshots from the National Healthcare Quality and Disparities Reports

We work with AHRQ to create interactive, web-based reports that summarize key indicators of healthcare quality for states, including relative strengths and opportunities for improvement. <http://statesnapshots.ahrq.gov>

National expenditures for Mental Health Services and substance abuse treatment

Under contract with the Substance Abuse and Mental Health Services Administration, our team of researchers and actuaries develops national spending estimates for the treatment of mental and substance use disorders. Reports created for them track important national trends, projections and state-level financing of these conditions. <http://www.samhsa.gov/spendingestimates/toc.aspx>

Home- and community-based waiver application on the Web

Our programmers and analysts developed an online application to transform a paper-based process into a more accessible web-based system which is now available to all 50 states to apply for, renew or amend their Medicaid HCBS 1915(c) Waivers. The Waiver Management System (WMS) is also used by states to submit their CMS 372 waiver utilization reports. The 1915(c) Waiver Management System (WMS) provides CMS with automated workflow, email notifications, and on-demand reporting capabilities. <http://www.hcbswaivers.net>

Technical support to the CMS Medicare-Medicaid Coordination Office

We provide technical support to the newly established Medicare-Medicaid Coordination Office (MMCO) at the Centers for Medicare & Medicaid Services. The MMCO was established under the Affordable Care Act to improve the coordination of services for persons who are dually eligible for both the Medicare and Medicaid systems. We support the MMCO in its effort to promote new initiatives at the federal and state levels to develop more integrated care systems that are designed to improve quality and lower costs for this vulnerable population. <http://www.cms.gov/medicare-medicaidcoordination/>

Integrated Healthcare Association (IHA) Pay for Performance (P4P) Program

We have assisted the IHA in the development of an Efficiency Domain for incorporation into its P4P program, including the identification and testing measures used to reward providers. We currently generate a diverse set of hospital- and pharmacy-related Appropriate Resource Use measures for more than 200 California physician organizations based on integrated claims data from seven health plans. http://www.iha.org/pay_performance.html

Structuring care recommendations for clinical decision support

Our researchers and a team of informatics leaders are translating U.S. Preventive Services Task Force (USPSTF) clinical guidelines and federal criteria related to meaningful use of health information technology into readily adaptable logic statements. They plan to make the results publicly available via the Internet. <http://www.ahrq.gov/clinic/uspstfix.htm>

Office of Information Products and Data Analysis (OIPDA) at Centers for Medicare & Medicaid Services (CMS)

The Truven Health Analytics team is developing a strategic plan for the Office of Information Products and Data Analysis (OIPDA) at Centers for Medicare & Medicaid Services (CMS). This plan will support and guide CMS data dissemination activities. We are conducting a comprehensive review of existing CMS data release policies, procedures, dissemination and pricing. The information collection and evaluation activities will inform OIPDA's creation of a business plan for CMS data dissemination and pricing, allowing the agency to expand the availability of data to a wide range of users in a manner designed to be cost effective and consistent with their legal and policy requirements.

Rely on Truven Health's expertise and databases to help you improve healthcare access, enhance quality and reduce costs.

Get connected

To learn more about Research Solutions, visit truvenhealth.com/your-healthcare-focus/government/analytics-and-policy-consulting or email us at fedgov@truvenhealth.com

About Truven Health Analytics, part of the IBM Watson Health business

Truven Health Analytics®, part of the IBM Watson Health™ business, provides market-leading performance improvement solutions built on data integrity, advanced analytics and domain expertise. For more than 40 years, our insights and solutions have been providing hospitals and clinicians, employers and health plans, state and federal government agencies, life sciences companies and policymakers, the facts they need to make confident decisions that directly affect the health and well-being of people and organizations in the US and around the world. The company was acquired by IBM in 2016 to help form a new business, Watson Health. Watson Health aspires to improve lives and give hope by delivering innovation to address the world's most pressing health challenges through data and cognitive insights.

Truven Health Analytics owns some of the most trusted brands in healthcare, such as MarketScan®, 100 Top Hospitals®, Advantage Suite®, Micromedex®, Simplr® and ActionOI®. Truven Health has its principal offices in Ann Arbor, MI, Chicago, IL and Denver, CO.

For more information, please visit truvenhealth.com

© Copyright 2017 Truven Health Analytics, part of the IBM Watson Health™ business

Truven Health Analytics, part of the IBM Watson Health™ business
100 Phoenix Drive
Ann Arbor, MI 48108

Produced in the United States of America
June 2017

IBM, the IBM logo and ibm.com are trademarks of IBM Corporation in the United States, other countries or both. Truven Health Analytics and its respective logo are trademarks of Truven Health Analytics in the United States, other countries or both. All other company or product names are registered trademarks or trademarks of their respective companies. A current list of IBM trademarks is available on the Web at “Copyright and trademark information” at www.ibm.com/legal/copytrade.shtml.

This document is current as of the initial date of publication and may be changed by IBM at any time. Not all offerings are available in every country in which IBM operates.

The information in this document is provided “as is” without any warranty, express or implied, including without any warranties of merchantability, fitness for a particular purpose and any warranty or condition of non-infringement. IBM products are warranted according to the terms and conditions of the agreements under which they are provided.

The client is responsible for ensuring compliance with all applicable laws and regulations applicable to it. IBM does not provide legal advice or represent or warrant that its services or products will ensure that the client is in compliance with any law or regulation.

The performance data and client examples cited are presented for illustrative purposes only. Actual performance results may vary depending on the specific configurations and operating conditions. It is the user’s responsibility to evaluate and verify the operation of any other products or programs with IBM product and programs.

Statement of Good Security Practices: IT system security involves protecting systems and information through prevention, detection and response to improper access from within and outside your enterprise. Improper access can result in information being altered, destroyed, misappropriated or misused or can result in damage to or misuse of your systems, including for use in attacks on others. No IT system or product should be considered completely secure and no single product, service or security measure can be completely effective in preventing improper use or access. IBM systems, products and services are designed to be part of a lawful, comprehensive security approach, which will necessarily involve additional operational procedures, and may require other systems, products or services to be most effective. IBM does not warrant that any systems, product or services are immune from, or will make your enterprise immune from, the malicious or illegal conduct of any party.

As of the latest publication date, the healthcare information presented here is accurate.

HPS03091-USEN-00