

Insightful and Interactive: Information to Support Confident Decision-Making



State Data-Scape from Truven Health Analytics,™ an IBM® Company, provides healthcare organizations with important local market insights.

- ✔ Helps answer essential questions and inform business decision-making
- ✔ Backed by an optimized new architecture
- ✔ Easy-to-use, highly interactive dashboards

The Truven Health State Data-Scape solution is designed to give hospital executives and strategic planners more than just the data. The solution provides interactive data visualizations in the form of dashboards and workbooks that support strategic decision-making and help organizations improve the bottom line. Users can quickly analyze inpatient, outpatient, and emergency room data.*

User-Centered Data Visualization and Dynamic Filters

This flexible system works the way you do, displaying your results using charting and mapping tools, and creating and saving commonly used views. So you can spend less time producing reports and more time exploring, understanding, and acting on the data insights at your fingertips.

Drilling down into complex datasets is done by clicking on different parameters of the charts, maps, and other visualizations. In addition, many workbooks and individual dashboards feature dynamic filters that allow you to further adjust the data parameters to manipulate the state data based on attributes such as:

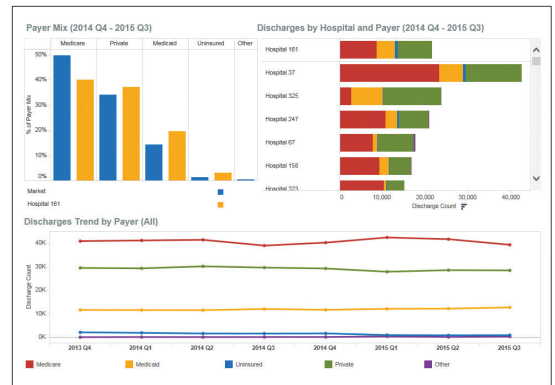
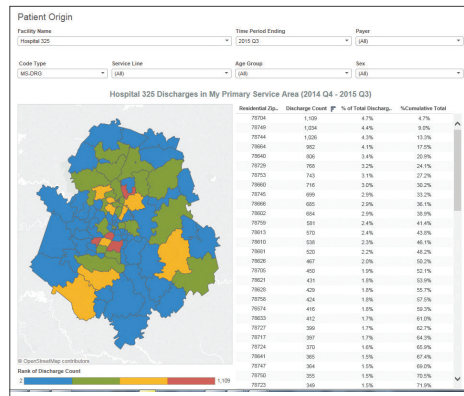
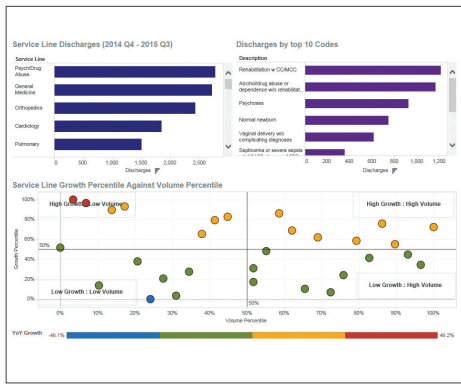
- Patient age group
- Clinical code type
- Product/service line
- Hospital/facility name
- Physician role**
- Physician specialty**
- Time period

* Where available

** Based on availability of physician data

A screenshot of the State Data-Scape web interface. The main heading is "Browse Popular Dashboards". Below this, there are two preview cards. The left card is titled "Inpatient Overview" and the right card is titled "Outpatient Overview". Each card shows a thumbnail of a dashboard with a map and a table. Below each thumbnail is an orange "Workbook" button. Underneath the thumbnails, the text "Truven Workbook" and "Last Updated 06.29.2016" is displayed. At the bottom right of the interface, there is a blue "BROWSE ALL" button.

Dashboards are web-based (software as a service [SaaS]) and provide curated insights from both outpatient and inpatient data — visualized into clickable charts, graphs, tables, maps, and more.



Sample dashboard (market volume) showing different types of drill-down capabilities.

Local, Current-Year, and Long-Term Inpatient and Outpatient Insights

The dashboards deliver insights and intelligence specific to your market, based on past actual utilization.

- Determine distribution of patients across service areas
- Identify procedures and diagnoses driving the most market volume
- Get insight into market- and facility-specific utilization trends, market share, physician loyalty,* and financial analysis

Market and Competitive Intelligence

- Understand your market position compared to your competitors' across all service lines
- Drill down into inpatient and outpatient procedural activity by competitor
- Know how much business competitor hospitals are drawing from your service area — overall and by service line/procedure
- Identify market leaders in your area and see how market share position has changed over time
- Pinpoint the scope, scale, and geographic footprint of key competitors' inpatient and outpatient programs

Physician Insights*

To identify physicians with the best opportunity for improved engagement, the dashboards deliver a visual summary of physician activity in your market.

- View where physicians send their patients for care
- Quantify leakage among medical staff, employed physicians, and payers
- Identify physicians and specialties providing key inpatient and outpatient procedures

* Based on availability of physician data



Get Connected

Email providersolutions@truvenhealth.com, call **800.525.9083** option 4, or visit truvenhealth.com



About Truven Health Analytics, an IBM Company

Truven Health Analytics, an IBM Company, delivers the answers that clients need to help them improve healthcare quality and access while reducing costs. We provide market-leading performance improvement solutions built on data integrity, advanced analytics, and domain expertise. For more than 40 years, our insights and solutions have been providing hospitals and clinicians, employers and health plans, state and federal government agencies, life sciences companies, and policymakers the facts they need to help them make confident decisions that directly affect the health and well-being of people and organizations in the U.S. and around the world.

Truven Health Analytics owns some of the most trusted brands in healthcare, such as MarketScan®, 100 Top Hospitals®, Advantage Suite®, Micromedex®, Simpler®, ActionOI® and JWA. Truven Health has its principal offices in Ann Arbor, Mich.; Chicago; and Denver. For more information, please visit truvenhealth.com | 1.800.525.9083